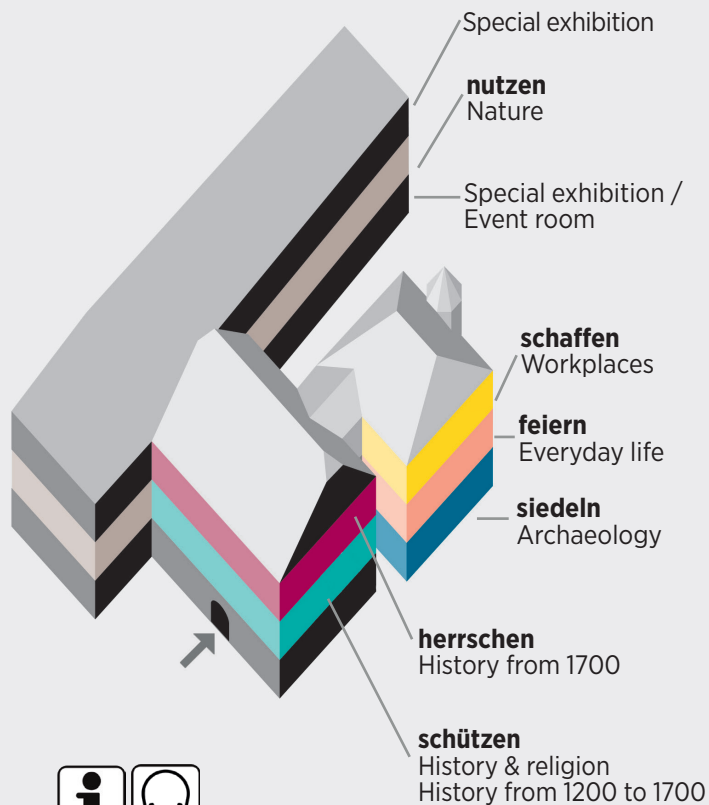
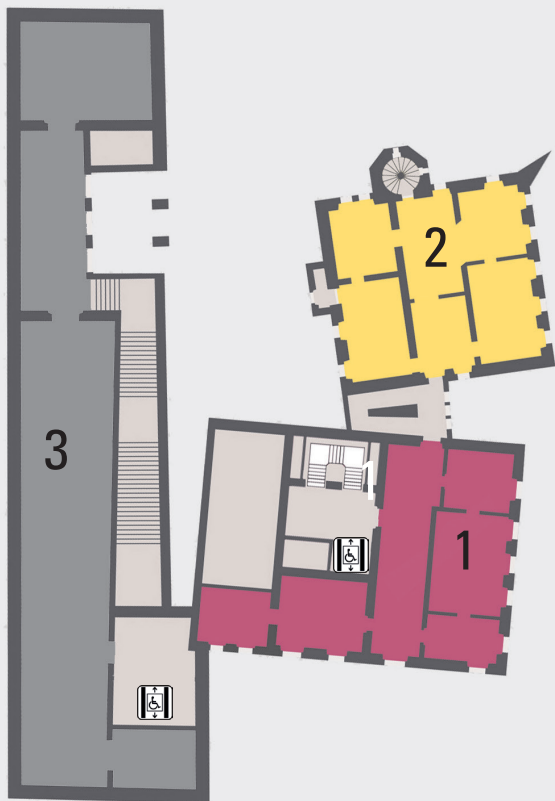


FLOOR PLANS

- 2**
- 1 herrschen**
History from 1700
 - 2 schaffen**
Workplaces

Access via ground floor

- 3** Special exhibition



0

- 1 **siedeln**
Archaeology
- 2 Special exhibition
- 3 Special exhibition /
Event room

1

- 1 **schützen**
History & religion
- 2 History from 1200 to 1700
- 3 **feiern**
Everyday life

Access via ground floor

- 4 **nutzen**
Nature
- 5 Learning & creative space

